



# MONTHLY MEMBERSHIP PROGRESS REPORT

Results as of: 1/31/2016

Multiple District 2

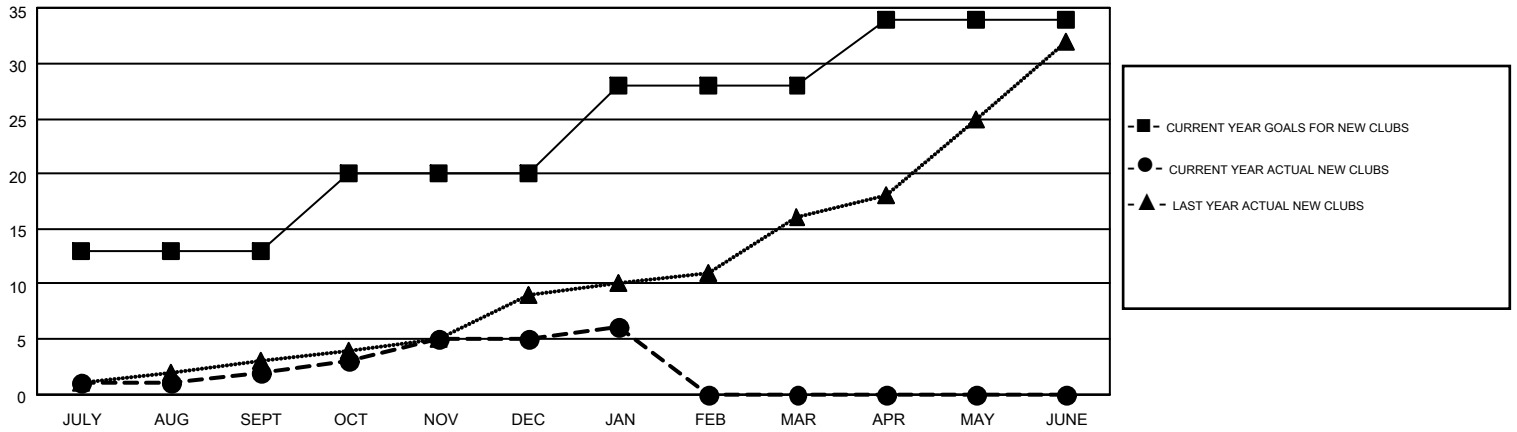
LOCATION: TEXAS

GMT: HAL GRIFFIN

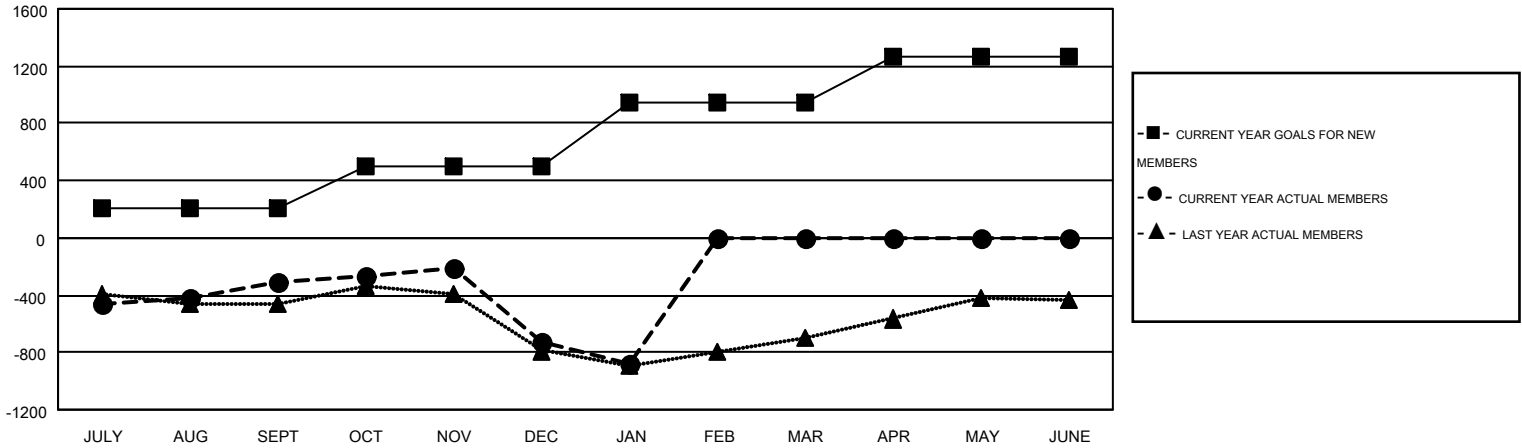
GMT CA 1

Clubs					Members				
RESULTS FOR 2015-2016					RESULTS FOR 2015-2016				
QUARTER	NEW CLUB GOAL	NEW CLUBS	DROPPED CLUBS	NET GAIN/LOSS	QUARTER	NEW MEMBER GOAL	CHARTER AND NEW MEMBERS ADDED	DROPPED MEMBERS	NET GAIN/LOSS
JULY/AUG/SEPT	13	2	4	-2	JULY/AUG/SEPT	212	974	1,284	-310
OCT/NOV/DEC	7	3	17	-14	OCT/NOV/DEC	289	824	1,237	-413
JAN/FEB/MAR	8	1	2	-1	JAN/FEB/MAR	441	331	484	-153
APR/MAY/JUNE	6	0	0	0	APR/MAY/JUNE	325	0	0	0

GOALS AND ACTUAL NEW CLUBS CUMULATIVE



GOALS AND ACTUAL MEMBERS CUMULATIVE



DROPPED CLUBS: 23	509 CLUBS OF 901 ADDED 1 OR MORE NEW MEMBERS	<u>GENDER DISTRIBUTION</u>	
<u>DROPPED MEMBERS</u>		MALE	17,121 (66.86%)
DECEASED	<a href="#">CLICK HERE FOR HEALTH ASSESSMENT DATA</a>	FEMALE	8,487 (33.14%)
CLUB CANCELLED		FAMILY UNIT MEMBERS	3,844
OTHER		HEAD OF HOUSEHOLD	1,884
TOTAL		NON-HEAD OF HOUSEHOLD	1,960